

HUB Headlight

HUB Division Inc., Northeastern Region, National Model Railroad Association - Volume 31 Number 1, September - October 2014
<http://www.hubdiv.org>

RAILFUN TIMETABLE

Our Season Opener and Welcome

By HUB Division Members

8 PM Friday, September 19, 2014, Cambridge School of Weston

To kick off a new year of RAILFUN events, and to welcome everyone back from our summer break, we are going to hold an information-sharing night where you will have an opportunity to meet and learn about the interests of others. We will again depart from our normal meeting format, and offer members the chance to give mini-presentations about your layout, "What I Did Over the Summer" on my layout, share hints and tricks or other exiting experiences. So, bring your little presentation or demonstration and we will give you 15 minutes to do your thing. If you bring your digital photos or a PowerPoint presentation, we will supply the laptop and projector. Email Ray Barry at Railfun.coordinator@hubdiv.org so he can schedule the number of presentations.

Presentation: Adding Prototype Signaling to Modules

By Dick Johannes

8 PM Friday, October 17, 2014, Cambridge School of Weston

Dick Johannes will share with us the presentation that he recently delivered at the 2014 NMRA National Convention in Cleveland regarding the prototypical signaling that has been added to the HUB Division's modular layout. As many of you know, the HUB is using the JMRI based Crandic Automated Traffic System (CATS) to communicate with the layout. The key to making these systems effective with our modular layout was defining each module as a self-contained model railroad in which modules can then be linked in any order. See Page 10 for photos of the system in action. Based on the experience of implementing the detection and signaling systems on the HUB owned modules, Dick will provide more in-depth details and suggestions on actually implementing the control system and wiring on your own module(s). Please join us for this presentation that will act as the stepping off point for you to now implement the system on your own module(s).

Hands-On Clinic: Detailing and Weathering Brick Structures

By Raymond Barry

8 PM Friday, November 21, 2014, Cambridge School of Weston

While today's styrene brick building kits are very detailed, they do not look very realistic in their molded colors. Come join us to learn how one can readily transform an unpainted styrene brick structure into a very realistic looking building with a few simple and inexpensive steps. You will learn tips and tricks for painting and weathering brick and techniques for detailing the roof. You are welcome to bring a brick structure to this clinic to detail and weather. There will also be a limited quantity of brick wall sections for attendees to practice on and bring home. Please bring a selection of small paint brushes, a rag, sand paper, a hobby knife, a metal straightedge and a cutting pad or small piece of plywood along with any weathering supplies that you may have.

The HUB Modular Group at the NMRA Cleveland Convention



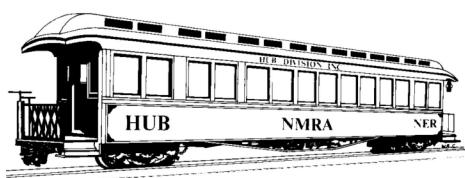
Cleveland's skyline and bridges as observed by HUB member Jeff Gerrow from a Lake Erie boat ride.

The HUB partnered with the Mid-Central Region's Divisions 1, 4 and 5 to create a very large layout at the NMRA National Convention in Cleveland, Ohio. See photos on Page 10 and the layout plan on Page 14.

INSIDE:

President's Car	Page 2
In Memoriam	Page 2
Shanty Talk	Page 3
Calendar of Events	Page 4
How I Became a MMR	Page 5
Achievements	Page 6
Dinner Train Photos	Page 6
Summer Picnic Photos	Page 7
River Plate Station Module ...	Page 8
Cleveland NMRA Photos	Page 10
FY 2014 Financial Report	Page 12
BOD and Leadership	Page 13
Order Forms	Pages 14 and 15

The map to Cambridge School of Weston appears on page 13.



THE PRESIDENT'S CAR

by Manny Escobar

As we begin the incoming year, the HUB activities of late spring, summer and early fall never stopped. At The Cape Cod Elegant Dinner Train Excursion in May, **Dick Towle** again had the weather conductor on our side. We had a diner car all for ourselves and the food was spectacular! I want to thank Dick and the Cape Cod Dinner Train crew and staff for a very enjoyable evening. In June our annual picnic at Waushakum Live Steamers was a huge success with 80+ attendees. Thanks again to **Dick Ball** and **Pete Watson** for their help in making this event a memorable one. Again, thanks to the Waushakum staff. We had a presence at the NMRA Convention in Cleveland, Ohio. The HUB Modular group was on display, in conjunction with the Mid-Central Region's Divisions 1, 4 and 5. The

Modular Group had the Signal/Dispatch station in operation (check out this video on YouTube: <http://youtu.be/MIN6VyVaQ-I>). Congratulations to **Dan Fretz** for "BEST IN SHOW" for his module. We had a few members also doing clinics and presentations during the week. Next, is our NER Convention September 11-14. Hope to see you all there in Palmer, MA.

At this time, I would like to say thank you to those of you that have supported the ongoing trailer fundraiser. We ran into a small glitch sending out the letters in May. Some of you may not have received one from me. We have no way to check on who has or has not received our fundraising letters. If you would like to contribute to this cause, please contact me via email at President@hubdiv.org, with your name and address and I will send you our fundraiser letter and form to donate for a new modular group trailer.

Well that's it for now. When it is time to write my next piece, the NER convention at Palmer will have passed. I'm expecting some great stories to come out from that.

Keep 'em Chugging!

In Memoriam

William "Bill" Powers, Jr.
November 25, 1945 - June 1, 2014

Long-time HUB member Bill Powers passed away June 1st following a long illness. For many years Bill manned the front of the Expo show and made announcements. He was also active in the Coastal Mountain group and the Metro West O-Scalers. He was the NER Secretary for three years. Bill was an engineer in real life, the electrical engineering kind, and had a long career including 20 years with EMC.

Bill was also a life member of the NMRA and HUB Division. His witty sense and friendliness will be missed.

Elizabeth Hawkes Brown
October 23, 1934 - April 7, 2014

The HUB Division has once again lost a long time member. Elizabeth Brown passed away at home on April 7, 2014. Elizabeth was the wife of HUB Division Past President Rod Brown and was HUB Life Member #4. She was an active participant at HUB Division activities through the 70's and 80's along with her husband Rod. In 1983 she was a recipient of the HUB Division's Don Pierce Award for service to the Division and the Hobby of Model Railroading.

Fiscal Year 2014 Appointments

James VanBokkelen - Vice President
Gerry Covino - Treasurer
Barbara Hoblit - Secretary
Peter Higgins - Membership
Bill Barry - Headlight Editor
Ray Barry - RAILFUN Coordinator
Rick Murray - Module Coordinator
Peter Watson - Office Manager/Clerk
Dick Johannes - Expo Show Director
Mark Harlow - Expo Show Manager
Ken Belovarac - Librarian
Rudy Slovacek - Donations Chairman
Don Howd - NMRA AP Chairman
Tim Garner - Public Relations Director
Dan Fretz - Webmaster

New England Diamonds



Palmer, Massachusetts

The Town of Seven Railroads

If you are seeing this before September 11th please consider attending the convention. Walk-in registrations are welcome, though you may not be able to attend some activities that required pre-registration. Please visit the convention website www.nediamonds2014.org

If you're reading this after September 14th, hopefully you attended the convention and had a good time. We will have more information about the convention happenings in a later issue.



The Headlight is always accepting photos and articles relating to model and prototype railroading. Please email editor@hubdiv.org.



Shanty Talk: Detours

by Rudy Slovacek

If you've been reading my column for the past year, many of you know that last September I began a quest for information to help me construct a wooden D&H caboose based on an old Gloor Craft kit. While they are called "kits", they are actually a collection of wood and wire sizes along with a few castings. Interestingly the wooden materials themselves, found in such craft kits (strip wood and scribed or embossed siding), are considered basic scratch-building materials – at least by the NER. I had hoped to have that caboose completed to be judged in the model contest at the National Convention. Not so much for competition but to earn enough points toward a merit award. But having once started, I took some detours along the way. First I wanted to make sure the Gloor Craft plans were reasonably accurate so I asked if anyone could supply the drawing by Chuck Youngkurth in the May 1972 issue of MR. I was rewarded with multiple responses, but before beginning, I realized there were several window combinations and the castings in the kit only allowed for the early caboose with tall windows. There are no commercial castings available for the later smaller windows used.

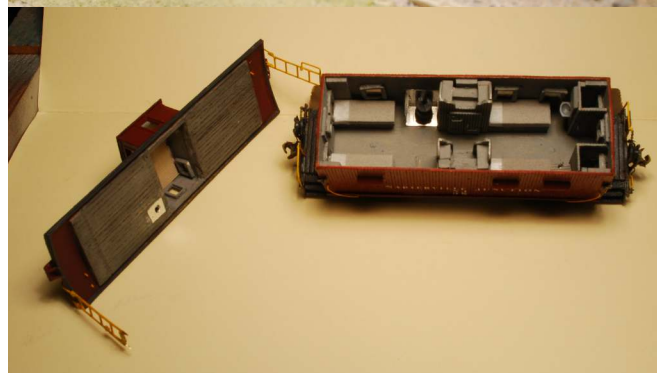
At this point, I could see I needed to learn how to do casting for the unavailable window sizes and some angle braces found on later styles and rebuilds of the wooden buggies over the years. So, I bought a rubber molding and epoxy casting kit from Micro Mark.

Also having purchased a Quality Craft kit for an Erie Wooden caboose at the same point in time, I thought it wise to hone my skill set by building the Erie caboose first before tackling the D&H unit. While researching my D&H caboose, I learned from "Cabins, Crummies and Hacks, Vol. 1 North and East" that a D&H subsidiary had several cabooses in the Erie style, so I became determined to make that Erie into a Napierville Junction (NJ) Caboose. Created by the D&H in early 1881, the NJ was the D&H gateway into Canada. It had the main line from Rouses Point, NY to Delson Jct, QC, now Delson, which gave it access to Canadian

Pacific's mainline onto the bridge into Montreal. On the other end at Rouses Point, NY, the D&H Railway continued down Lake Champlain toward Whitehall, Albany and beyond.

In construction, I learned I could save time by making copies of the scale drawings, cut them out and stick them to the scribed siding with double sided tape to locate window openings and grab locations instead of making literally hundreds of measurements. It made it so easy, that before I knew it, I had two caboose bodies completed in short order. It was at the roof stage that I made another decision to model the interiors. But not before I had completed both one-piece roofs. After considerable drilling, and Dremel tool work, busted wood, and some epoxy repairs, the cupolas were assembled on the roofs and the decision was made to complete the NJ caboose first. Don Howd had supplied me with an internal Erie caboose drawing so I was off building beds, closets, raised seating, a toilet closet, desk and other furnishings all from scratch. I also actually used some

window resin castings for the inside sills and frames. One last glitch came when I discovered no one sells the white lettering for the NJ caboose! That meant I had to hand letter by letter the caboose using a white condensed roman letterset. I had done this before when I first started doing lettering for the Coastal Mountain and before I had some decals made up. But that was on smooth-sided rolling stock. Producing similar quality on scribed painted wood is a little more difficult. I've settled on the use of Floquil Crystal Coat as both my base and final protective coat for the decals. It gives a slight sheen as if just emerging from the paint shop.



I entered the caboose in the National contest under the "Kit" category but will need to rework a few things to qualify for a merit award. The public was obviously pleased though as I took first in the Caboose category of the People's Choice vote. If you can lay your hands on a copy of "Cabins, Crummies and Hacks" compare the photo of my model with the prototype on pg 43. Stay tuned as I tackle the completion of my early D&H caboose next. I look forward to seeing many of you this fall.

HUB Division Calendar of Events (Subject to Change)

2014

Sep 11-14 (Thur-Sun)	2014 NER Convention, Palmer, MA, co-hosted by the HUB and Nutmeg Divisions
Sep 19 (Fri)	HUB RAILFUN Meeting, 8 PM, Cambridge School of Weston, Weston, MA
Oct 1 (Wed)	Submissions deadline for the HUB Headlight Nov-Dec issue
Oct 5 (Sun)	HUB Modular Railroad display at Pepperell Siding Model RR Club, Pepperell, MA
Oct/Nov TBD	HUB Modular Railroad display at Children's Hospital, Boston, MA
Oct 17 (Fri)	HUB RAILFUN Meeting, 8 PM, Cambridge School of Weston, Weston, MA
Nov 21 (Fri)	HUB RAILFUN Meeting, 8 PM, Cambridge School of Weston, Weston, MA
Nov 22-23 (Sat-Sun)	HUB Modular Railroad display at the Greenberg's Toy & Train Show, Shriner's Auditorium, Wilmington, MA
Dec 1 (Sun)	Submissions deadline for the HUB Headlight Jan -Feb issue
Dec 6-7 (Sat-Sun)	The HUB-sponsored New England Model Train EXPO at the Best Western Royal Plaza Trade Center, Marlborough, MA
Dec 13-14 (Sat-Sun)	HUB Modular Railroad display at the National Heritage Museum, 33 Marrett Road, Lexington, MA

2015

Jan 10 (Sat):	HUB Holiday Party, Old Colonial Cafe, 171 Nahatan Street, Norwood, MA. Menu and signup details will be in the Nov-Dec Headlight
Jan 16 (Fri)	HUB RAILFUN Meeting, 8 PM, Cambridge School of Weston, Weston, MA
Jan 17-19 (Sat-Mon)	HUB Modular Railroad display at the Wenham Museum, Wenham, MA
Jan 24-25 (Sat-Sun)	HUB Modular Railroad display at the Amherst Railway Society's Railroad Hobby Show, Eastern States Exposition Fairgrounds, West Springfield, MA
Feb 1 (Sun)	Submissions deadline for the HUB Headlight Mar-Apr issue
Feb 20 (Fri)	HUB RAILFUN Meeting, 8 PM, Cambridge School of Weston, Weston, MA
Mar 20 (Fri)	HUB RAILFUN Meeting, 8 PM, Cambridge School of Weston, Weston, MA
Mar 21-22 (Sat-Sun)	HUB Modular Railroad display at the Greenberg's Toy & Train Show, Shriner's Auditorium, Wilmington, MA
Apr 1 (Wed)	Submissions deadline for the HUB Headlight May-Jun issue
Apr 11 (Sat)	The HUB-sponsored Spring TRAINing show at the Holiday Inn, Taunton, MA
Apr 11 (Sat)	HUB Division Annual Meeting and Election after Spring TRAINing show
Apr 17 (Fri)	HUB RAILFUN Meeting, 8 PM, Cambridge School of Weston, Weston, MA
May 15 (Fri)	HUB RAILFUN Meeting, 8 PM, Cambridge School of Weston, Weston, MA
Jun 19 (Fri)	HUB RAILFUN Meeting, 8 PM, Cambridge School of Weston, Weston, MA
TBD (Sun)	HUB Summer Picnic, Waushakum Live Steamers, Holliston, MA
TBD (Thur-Sun)	2015 Joint MER and NER Convention, New Jersey
Aug 23-30 (Sun-Sun)	2015 NMRA National Convention, Portland, OR

Fall Shows and Open Houses

September 28, 2014 (Sun): The Old Colony Model Railroad Club's 14th Annual Train Show, Taunton Holiday Inn, Taunton, MA, www.ocmrrc.com	October 25-26, 2014 (Sat-Sun): The South Shore Model Railway Club's annual Fall Model Railroad Show & Open House, Hingham, MA, www.ssmrc.org	November 28-30, 2014 (Fri-Sun): 20 th Annual "Tour de Chooch" layout tour, Southern NH, Northeastern MA, www.hubdiv.org/tourdechooch.htm
October 5, 2014 (Sun): Pepperell Model Railroad Club Show and Open House, Pepperell, MA, www.psmrc.org	November 2, 2014 (Sun): The Worcester Model Railroaders Open House, Dudley, MA, www.wmrr.org	December 6-7, 2014 (Sat-Sun): Bay State Model Railroad Museum Holiday Open House, Roslindale, MA, www.bsrmr.org
October 11-12, 2014 (Sat-Sun): The North Shore Model Railroad Club's 34th Annual Train Show (Sat) & Open House (Sat & Sun), Wakefield, MA, www.nsmrc.org	Note: These are presented here for the benefit of members. If you belong to a club and want to promote your open house or show, please email editor@hubdiv.org	

How I became a Master Model Railroader

by Michael Tylick, MMR

Years ago Bob Buck suggested I work towards becoming an NMRA Master Model Railroader (MMR) so I looked into the requirements. The various projects involved didn't seem to be so difficult but the extensive paperwork seemed overwhelming. By then I'd already done much of the necessary work; I think most people who have built model railroads for a decade or more are pretty much there. But the documentation remained daunting. Perhaps it is necessary to prove fulfillment but I would rather play with my toys than write arcane papers. I am not one who enjoys contests and competition, which seemed necessary for several of the awards. So the idea of obtaining an MMR lay dormant in my netherworld of things to do someday.

Much of the impetus behind my award must go to Henry Pierce of Rhode Island. Clever fellow that he is, Henry told my wife, Marguerite, about the program, knowing she would "encourage" me into working towards an MMR. Once I started, the documentation wasn't so bad, but along the way I gained infinite respect for those who completed the requirements before the digital age. There is no question that technology saved everyone a great deal of time and money on this project, not to mention reams of paper and photographic film.

The first few certificates were simple. I had been published numerous times in the hobby press and delivered numerous clinics, so the Author award was gained by little more than copying the requisite number of pages from the *Model Railroader* DVD, placing them on another CD and writing a brief bibliography. While I have never held office in the NMRA, I am usually willing to help out with conventions and other events; it doesn't take too many hours of your time to win the Volunteer award. When the 2009 National Convention was held in nearby

Hartford, Connecticut, I became the design coordinator for the show's image and graphics. Volunteering to advance the association can take many forms and can also be a fun (and worthwhile) way to give back to the hobby.

There are eleven available achievement awards, from which you must choose seven. They encompass most aspects of the hobby. Plan on building a layout – it doesn't have to be yours – if you want to win enough awards. In my case, over the years I had completed most of the requirements for the construction and engineering awards but, for various reasons, no longer had much tangible evidence. Starting over on a large enough layout was just not in the cards anymore – been there, done that. The advantages of digital cameras caused me years ago to start photographing everything I worked on for business purposes. The construction categories are not tied into contests – judges could come to your home and verify your work wherever it is. Henry suggested I try this approach, although I had been strongly discouraged from following this course several times in the past. Between extant projects scattered about in different places, and lots of photographic documentation I was able

to complete enough of the requirements to gain the necessary certificates. At least two judges are required for certificates – this award would not have been possible without the help and patience of both Henry and Justin Maquire. Between them they provided enough guidance and assistance to complete the necessary paperwork. Regional chairman Bill Brown was also open to digital evidence and also very encouraging in my quest. Let me thank them all here and mention that I am sure they would be happy to assist you (as I would be) as well.

Last autumn I officially became Master Model Railroader #523. Rather large for an "exclusive," but this shows an MMR is attainable by almost anyone. Now modelers tend to look at me as an expert on all aspects the hobby, but I still have the same weaknesses and limitations I always had. The only real change is the perception. On the other hand, *Model Railroader Magazine* estimates there are approximately four hundred thousand miniature railroad hobbyists in the United States, many more worldwide. So I guess this is an achievement after all and I guess I am rather proud of myself.



A two-truck shay lumbers over a plate girder bridge on Mike Tylick's Marshfield & Old Colony layout.

Photograph by Mike Tylick

Achievements



*Gerald Abegg, MMR finally receives his MMR plaque from HUB AP Chairman Don Howd, MMR during the June RAILFUN meeting.
Photograph by Bill Barry*



*James VanBokkelen receives his AP Certificate for Master Model Electrician from HUB AP Chairman Don Howd, MMR during the June RAILFUN meeting.
Photograph by Bill Barry*

Cape Cod Elegant Dinner Train Excursion! May 31, 2014



*The HUB group gathered next to the Hyannis Station prior to departure.
Photograph by Dick Towle*



*Assembled outside the car in which we would be spending our evening.
Photograph by Dick Towle*



*Everyone settled down for a pleasant ride and a delicious meal on a beautiful evening.
Photograph by Dick Towle*



*Buzzards Bay Tower
Photograph by Barbara Hoblit*



*Mass Coastal Number 2007 was the motive power for our trip.
Photograph by Barbara Hoblit*

HUB Summer Picnic at Waushakum Live Steamers

June 22, 2014



Brenna Whitney looks on as Dick Ball brings a trainload of happy riders in from a trip around the railroad.
 Photograph by Bill Barry



The HUB Group gathers under the tent for some food. Barbara Hoblit, her children and David "Shack" Haralambou are in the foreground.
 Photograph by Bill Barry



Jeff Gerrow tries to get the right photo of a steam engine departing the pick-up area.
 Photograph by Peter Watson



The same engine out on the railroad with a load of HUB members and family.
 Photograph by Peter Watson



Peter Higgins enjoys his ride behind this CP Rail diesel.
 Photograph by Peter Watson



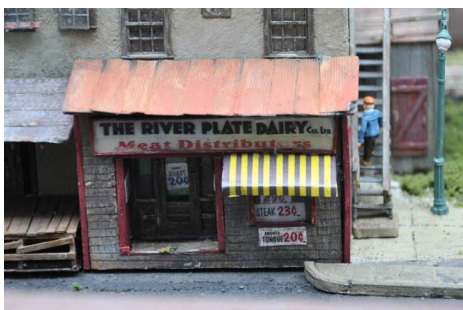
Dick Ball and his engine.
 Photograph by Jeff Gerrow



This overall view from the right end of the module shows many of the structures. Grumpy's Diner is in the left foreground, Bruno's Gas Station is in the right foreground, the River Plate Station is to the left and Brodie's Tavern and Bootleggers Boot & Shoe Co. are to the right.



This view from the left end of the module shows the freight house, pump house and left end of station, while the Brodie's Tavern and the Dairy are further back. I even included a red pipe in the pond to feed the pump house on the other side of the tracks.



This River Plate Dairy sign is a real advertisement taken from an old newspaper (1930s) and was operated by my grandfather - Henry Reynolds. (along the River Plate - running through Buenos Aires.)

River Plate Station

by Andy Reynolds

My newest module, over 400 hours of work, many of George Sellios' Fine Scale Miniatures kits and lots of scratch building and hand made scenery. A special thanks to my loving wife Mary E. Reynolds who put up with me during all those crazy hours!



Inside "all the buildings" are tiny details - too numerous to mention. This is a view inside of Bruno's Garage.



Bootleggers' Boot & Shoe Co. Check out the crazy details on this roof. One can see the bare wooden planks, and then a layer of shingles and then another layer of rusted tin sheets. Note the various types of materials used on the outside walls too.



Every board on the water tank was individually put in with tweezers with a little dab of roofing tar squeezed on each edge before they were added to the tower.



This water tower, too, was painfully re-created, with tiny dollops of real roofing tar between each board. Also, notice the rings around the tower with the swash buckles. (very hard to do).



This little hot dog cart is appropriately located right across from the station.

River Plate Station Module by Andy Reynolds



This building could do with a scrape-down and a new paint job. Notice the chipped paint? Note the dip in the upper garage roof, which probably was sunk due to some water damage. (See the tear in the shingles?)



GRUMPY'S DINER - Hand-made signs portraying the master chef "Grumpy." Notice the curb stones. These were made from Elephant Gray clay, baked in my oven for 30 minutes at 250 degrees F. Note the tables inside the diner, along with the wait staff and customers. This scene too, has electrical LED lighting (not on at the moment).



A very small building (Diner kitchen) but lots of details. There are two cats around the garbage cans.

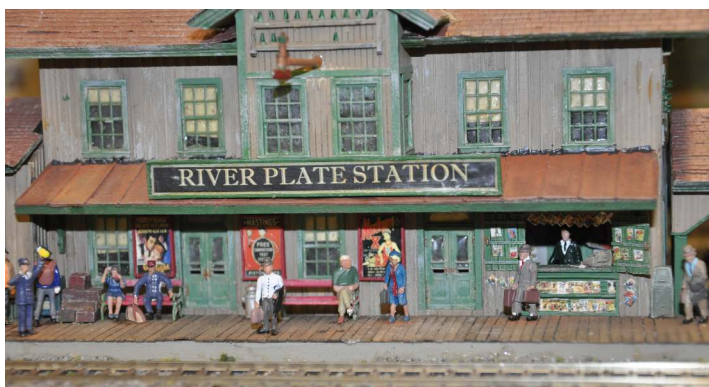


This overall view of the station was taken at the Cleveland Convention. The freight house on the left has many interior details.



Above is a view of the box car being used for storage with a scratch-built platform in front.

Left is a view of the front of Bruno's Garage.



Close-up of the trackside face of the station. Note the very small newspapers around the news stand.

The HUB Modular Group at the NMRA Cleveland Convention



The modules and cabinets are unloaded and ready to be assembled.
Photograph by Andy Reynolds



The assembled layout. Note the 3-signs, there were effectively three large layouts with interconnections.
Photograph by Andy Reynolds



David "Shack" Haralambou, James VanBokkelen, and Dick Johannes sit in the layout's massive dispatch center.
Photograph by Andy Reynolds



Dick Johannes mans the control computer at the massive dispatch center.
Photograph by Dick Johannes



Ken Belovarak and Gerry Covino having a conversation below the layout during setup.
Photograph by James VanBokkelen



Ken Belovarak, John Lutz, Gerry Covino, Dan Fretz, Jeff Gerrow pose for the camera. Gerald Abegg, foreground, and Dick Johannes and Dick Ball, background, aren't facing the camera.
Photograph by James VanBokkelen

The HUB Modular Group at the NMRA Cleveland Convention



*Ben and Dan Fretz deep in conversation at the Fiddle Yard.
Photograph by Andy Reynolds.*



*Dan Fretz's module with the "Best in Show" plaque on display.
Photograph by Andy Reynolds.*



*Mary Reynolds and Gerry Covino work together to install the legs on one of the bridge transition modules.
Photograph by Andy Reynolds*



*Rudy Slovacek provides direction to Gerry Covino at the throttle while Ken Belovarac uncouples cars and an attendee looks on..
Photograph by Andy Reynolds*



*Peter Gerrow operates the Flying Yankee.
Photograph by Jeff Gerrow*



*Barbara Hoblit's daughter Ilona Trembath manages the Boston Yard panel during the show.
Photograph by Debbie Ames*

Please see Page 14 for Larry Madson's plan of the entire modular layout that was on display

NATIONAL TRAIN DAY 2014



Bill Goldthwait discusses his new display layout with an attendee at New Haven Union Station during Amtrak's 7th Annual National Train Day on May 10, 2014. Photograph by Dick Towle



Another shot of the pump building and water tower on Andy Reynolds' new module taken at the Cleveland Convention. Photograph by Andy Reynolds

HUB Member Publications

We would like to highlight the efforts of HUB Members that can be found in other hobby and railroad-related publications. If you've had something published and would like to share the news with your fellow HUB Members, please email editor@hubdiv.org with the information. You can also find an extensive list on the HUB website at: www.hubdiv.org/articles.htm.

Treasurer's Report

by Gerry Covino

Our Division continued to provide and expand programs that support its mission through our dedicated volunteers, while we continued to maintain a solid financial position as seen in the statement presented below.

The generosity of our members, and numerous small donations from friends of the HUB Division are key to our success as a non-profit organization. The programs we offer continued to provide revenue that helped offset their costs. The Module Group delivered enjoyment to many modelers under the direction of **David "Shack" Haralambou**, and our RAILFUN meetings continued to grow in popularity under the direction of coordinator **Ray Barry**.

Our major fundraising event, the "New England Model Train EXPO," continues to be successful. Through the efforts of **Richard Johannes**, **Mark Harlow**, our army of volunteers and you, our members, the event provides financial resources that fund a major portion of the Division's programs. The Division leadership is extremely grateful and thankful for the effort and support you provide with the many volunteer hours required to staff this two-day event. Your donation of at least one hour of your time on both days of the show is requested. We thank you by providing you admission to the show.

As we commence our new fiscal year, the Board has again approved a balanced budget to ensure the Division's ability to

Fall Show - Volunteer Early

The HUB Division's New England Model Train EXPO is December 6 & 7. Contact Dick Johannes at (617) 791-8263 or nemte.director@hubdiv.org and volunteer for at least one hour on Saturday and on Sunday. You may request assignments at the white elephant table, membership table, build-a-car kit, or the door.

continue providing quality programs for the benefit of our membership and the hobby of modeling. We encourage everyone to enjoy the upcoming season and to be an active participant in all the HUB's programs.

The Division is in the midst of its first directed fundraising drive asking members to make a dedicated donation for the purchase of a new trailer for use by the modular group. Your response to date has been outstanding and the Division is half-way to its goal as articulated by our President in his appeal letter. If you have not yet made a donation, please consider doing so soon, as the need for the trailer in support of the upcoming railroad season is upon us.

Finally, the Board urges each of you to make an annual financial contribution to the HUB Division and maybe consider leaving part of your railroad collection to the HUB. **The HUB Division is a registered 501(c)3 non-profit organization.** This means your contributions to the HUB, as with other non-profit organizations, may be tax deductible on your federal income tax return. You will find a form in this issue of the Headlight for use in making your contribution.

Your financial support as well as your volunteer support will continue to ensure the ongoing success of the organization and the programs offered to you and to new members. Your ongoing generosity is greatly appreciated.

Have a great modeling year.

Year-Ended June 30, 2014 Account Balances

Checkbook	\$ 2,332.43
General Savings Account	1,023.57
Reserve-Live Savings Account	34,577.21
Program Checking Account	329.66
PayPal Account	878.79
USPS Permit Account	<u>2.44</u>
Total Funds Available	\$ 39,144.10
Value of Club Car Inventory	<u>2,312.90</u>
Total Value of Cash and Assets	\$ <u>41,457.00</u>

HUB Headlight

Volume 31, Number 1, September - October, 2014

HUB Headlight, published by The HUB Division Inc., Northeastern Region, National Model Railroad Association, is issued in January, March, May, September and November. Contributions may be sent by email to the Editor or by mail to the Office Manager.

HUB Division Board of Directors

President

Manny Escobar
President@hubdiv.org

Vice President

James VanBokkelen
VP@hubdiv.org

Debbie Ames
HUBboard9@hubdiv.org

John Doehring
HUBboard6@hubdiv.org

Webmaster

Dan Fretz
Webmaster@hubdiv.org

Membership Chairman

Peter Higgins
Membership.chairman@hubdiv.org

Dave Insley
HUBboard8@hubdiv.org

Model Train Expo Show Director

Dick Johannes
NEMTE.Director@hubdiv.org

Bill Roach
HUBboard2@hubdiv.org

Treasurer
Gerry Covino
Treasurer@hubdiv.org

Secretary
Barbara Hoblit
Secretary@hubdiv.org

NMRA NER Representative
Headlight Editor
Bill Barry
Editor@hubdiv.org

Railfun Coordinator
Ray Barry
Railfun.coordinator@hubdiv.org

Other HUB Division Leadership

Office Manager
Pete Watson
Officemanager@hubdiv.org
65 Branch Road
East Bridgewater, MA 02333-1601

Module Coordinator
Rick Murray
ModuleCoordinator@hubdiv.org

Librarian
Ken Belovarac
Librarian@hubdiv.org

Donations Chairman
Rudy Slovacek
Donations@hubdiv.org

Model Train Expo Business Manager
Mark Harlow
NEMTE@hubdiv.org

Director-Public Relations
Tim Garner
PRDirector@hubdiv.org

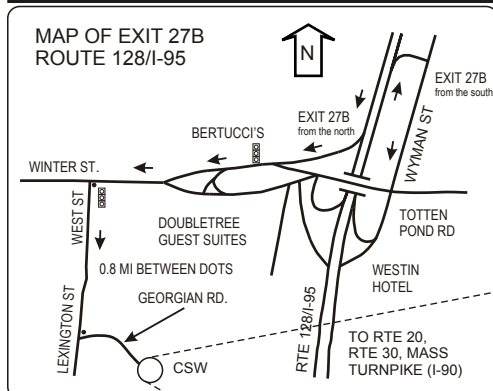
NMRA AP Chairman
Don Howd
HUB.AP.Chair@hubdiv.org

Membership: National Model Railroad Association members residing within the boundaries of The HUB Division: zip codes 01400 through 02699. (Barnstable, Dukes, Essex, Franklin, Middlesex, Nantucket, Norfolk, Plymouth, Suffolk, and Worcester counties of Massachusetts.)

Headlight Printers
Versatile Printing Services, LLC
Burlington, MA

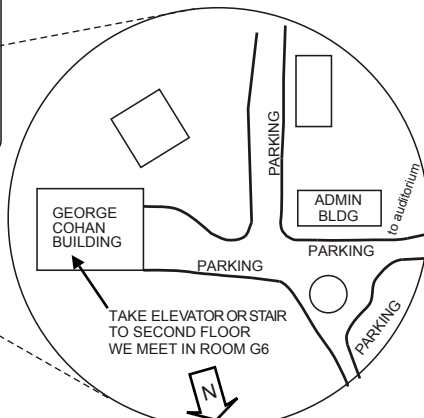
RAILFUN Weather Note:

If the school is closed, we will NOT have RAILFUN that evening. School closings are broadcast over the radio at **WRKO 680AM** and **WBZ 1030AM**, and on **TV Channels 4, 5 and 7**. The Cambridge School of Weston recording is at **781-642-8600**. Check the radio or TV stations early on the morning of RAILFUN! You can also check www.hubdiv.org and we plan to post notices on **Facebook** and **Twitter**.



MAP TO RAILFUN MEETINGS

MAP TO CAMBRIDGE
SCHOOL OF WESTON

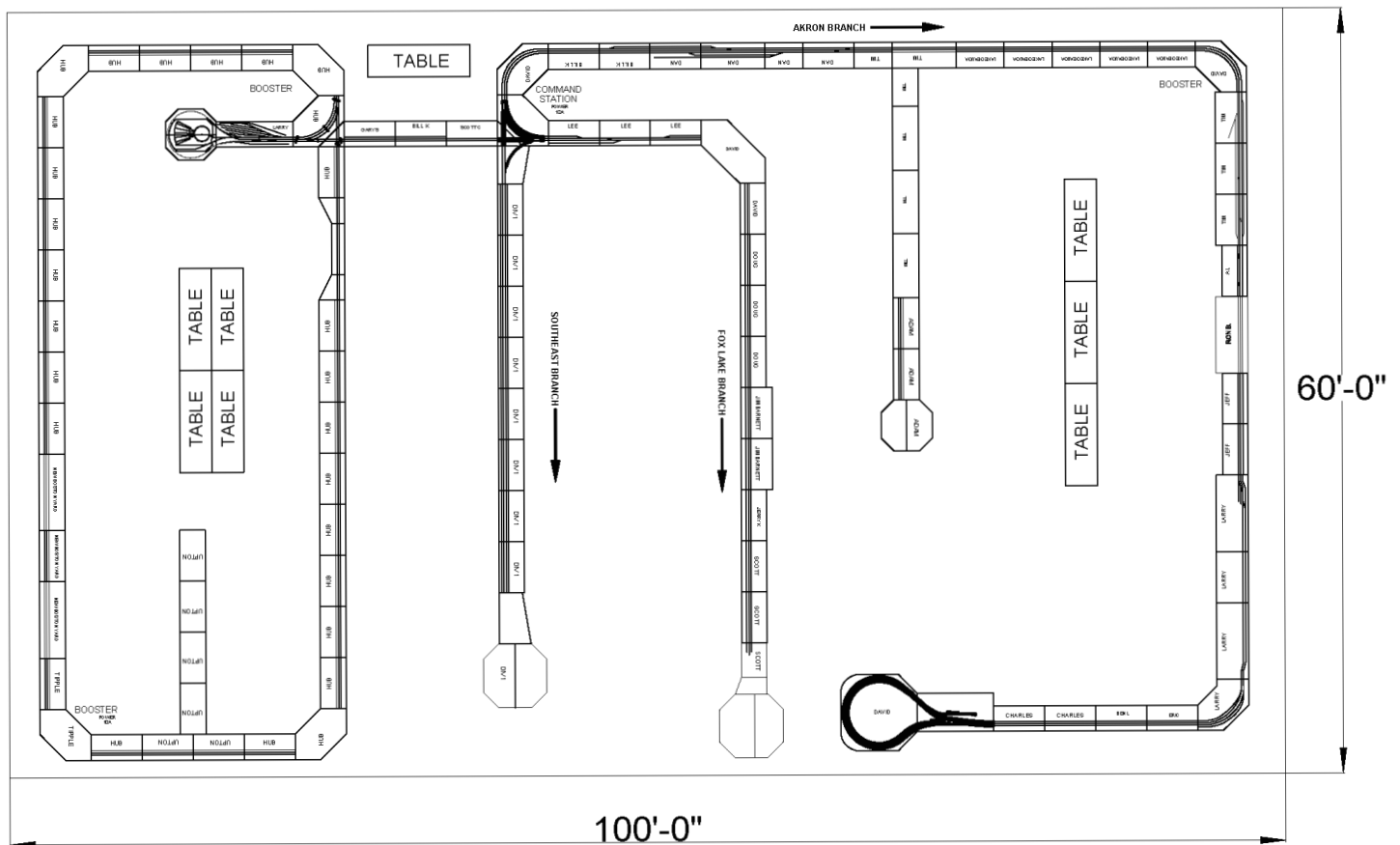


Seacoast Division Model Railroading Night

- September 19th
- October 10th

Meetings are Friday night at 7 PM in the Marion Gerrish Community Center, 39 West Broadway, Derry, NH. See <http://www.seacoastnmra.org> for info.

NTS 2014 COMBINED HO MODULES



Order Form - HUB Division Apparel

Short Sleeve Shirt and Sweatshirt Available Sizes S M L XL 2XL 3XL

Short Sleeve Shirts - Ash color Shirt with HUB Division Logo - **\$30.00 each**

Size: _____ Quantity: _____ Amount \$ _____

Circle ONE With Pocket Without Pocket

Name on Shirt _____

Sweatshirt - Ash color with HUB Division Logo - Sizes as listed for shirts

8.0oz Weight **\$25.00 each** Size: _____ Quantity: _____ Amount \$ _____

9.5oz Weight **\$30.00 each** Size: _____ Quantity: _____ Amount \$ _____

Name on Shirt _____

T-Shirts - Ash color Shirt with HUB Division Logo - **\$18.00 each**

Size: _____ Quantity: _____ Amount \$ _____

Circle ONE With Pocket Without Pocket

Name on Shirt _____

Long Sleeve Shirt - Heather color Shirt with HUB Division Logo (**NO POCKETS**)

Small to XL **\$30.00 each** Size: _____ Quantity: _____ Amount \$ _____

2XL to 5XL **\$35.00 each** Size: _____ Quantity: _____ Amount \$ _____

Name on Shirt _____

— (If you wish to have it mailed to you add \$5.95) — Shipping \$ _____

Total Check (Payable to The HUB Division, Inc.) Amount \$ _____

Your name: _____

Phone or email: _____

Above: Overall Cleveland Modular Layout plan by Larry Madson, Revision 7, dated July 2, 2014

Mail to:

Gerald Covino, Treasurer

The HUB Division, Inc.

P.O. Box 1154

Burlington, MA 01803-6154

Orders must be received by Oct. 1, Jan. 1 or Apr. 1. You will be contacted if there are any questions with your order and you will be notified when your order arrives. People may pick up their orders at RAILFUN meetings or shows to avoid the additional mailing costs. **If you request mailing, please provide your mailing address.**

To purchase using your credit card, email your order to Treasurer@hubdiv.org and an invoice will be sent to you.



JOHN DOE
MODULE GROUP

NAME TAGS AVAILABLE AGAIN

Now with magnetic holders

Badge and first line of printing is \$11.30, plus \$3.00 S&H.
Each additional line is another \$2.00. You may have up to three lines on your name tag.

COST: \$14.30 (1 line) \$16.30 (2 lines) \$18.30 (3 lines)

First Line																				
2nd Line																				
3rd Line																				

Make check payable to: The HUB Division, Inc.

Mail order to: The HUB Division Inc.
P.O. Box 1154
Burlington, MA 01803-6154

Send completed tag to:

NAME _____
STREET _____
CITY _____ **ST** _____ **ZIP** _____

HEADLIGHT Subscription Form - HUB Division, Inc. - NER/NMRA

I enclose \$7 for a subscription to the HUB Headlight for 2012-13.

Name _____

Address _____

City _____ State _____ Zip _____

Make checks payable to:
The HUB Division, Inc.

Mail to: Gerry Covino, Treasurer
The HUB Division, Inc.
P.O. Box 1154
Burlington, MA 01803-6154

To order or renew subscriptions by credit card, send an email to Treasurer@hubdiv.org and an electronic invoice will be sent to you.

Support Your Division!



The HUB Division, Inc.

P.O. Box 1154

Burlington, MA 01803-6154

It Takes All of Us Working Together!

() \$25.00 () \$50.00 () \$100.00 () Other \$ _____

YES, I am happy to support The **HUB Division, Inc.** to foster railroading through displays, modeling and educational opportunities to members and the public at large. I show support with the enclosed gift.

NAME _____

ADDRESS _____

CITY _____ **STATE** _____ **ZIP** _____

To make a donation using your credit card, email Treasurer@hubdiv.org.

Please make your check payable to "The HUB Division, Inc."

Send your payment to the address above.

HUB Module Kits Available

The HUB Division offers to its members a complete packaged module kit for \$155. The kit has everything you need, including all pre-cut lumber, hardware, a complete wiring harness for the DCC and inter-module connections, a panel-jack and wire, and even roadbed and the track! A module is the perfect solution if you do not have the space for a full-size layout or just want to experiment or learn new techniques without committing the time and money to a larger setup. Please contact Mark Harlow at modulekits@hubdiv.org with additional questions and to order the module kits.